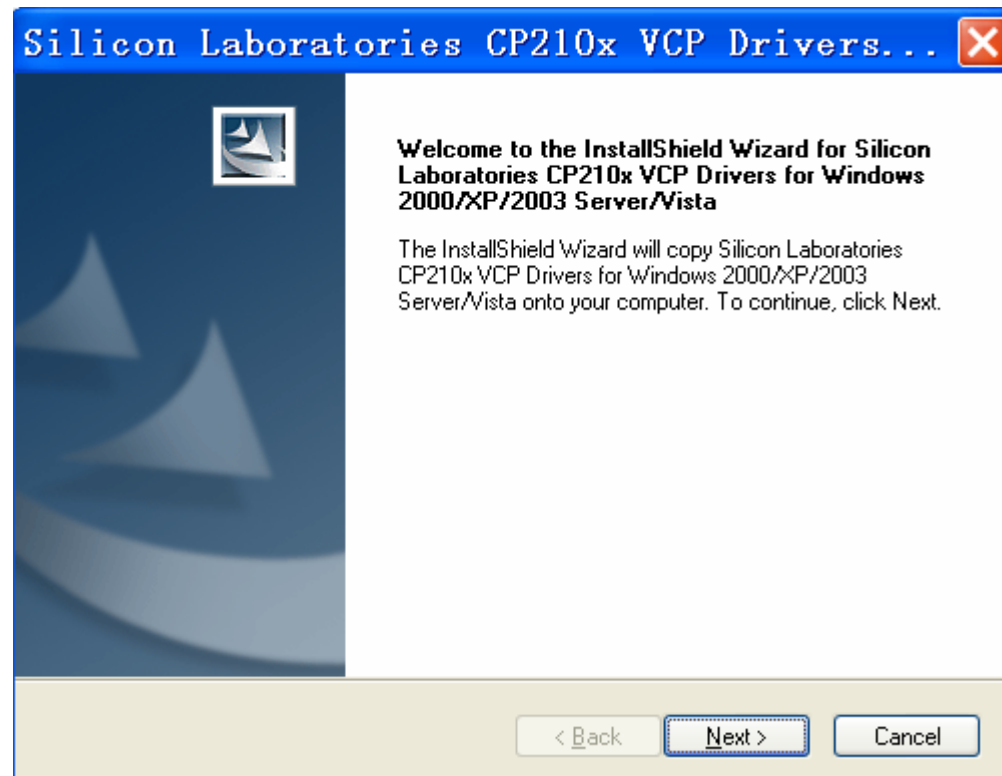


## 1.Setup the PC software.

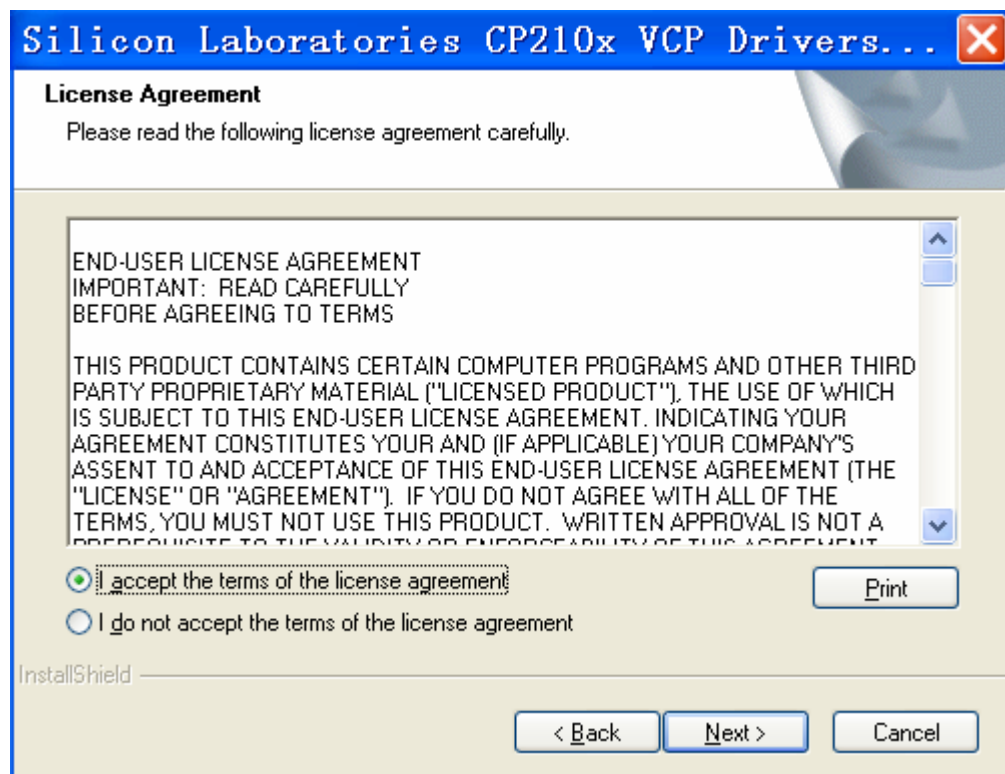
Install the supplied Windows PC Software by placing the supplied program disk in the PC CD-ROM drive. If the installation program does not automatically open and provide on-screen prompts, double click the SETUP.EXE file included on the program disk. Follow the on-screen prompts to complete the installation.

## 2.Setup cp210x Driver

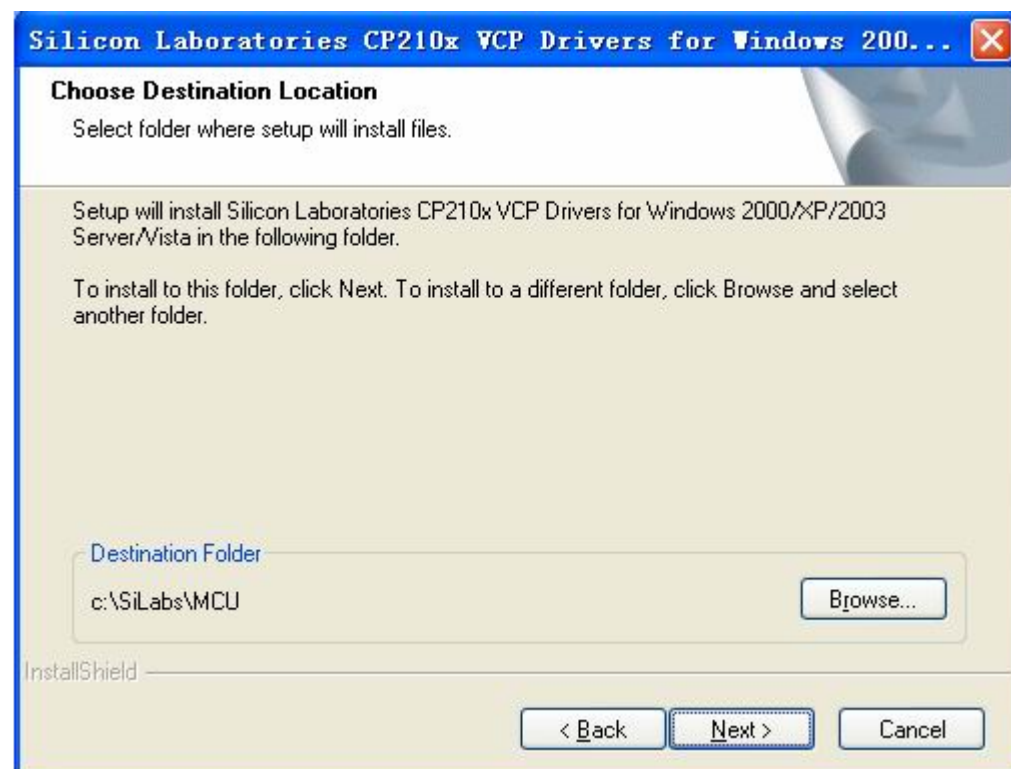
Double click the CP210x\_VCP\_Win2K\_XP\_S2K3.exe.



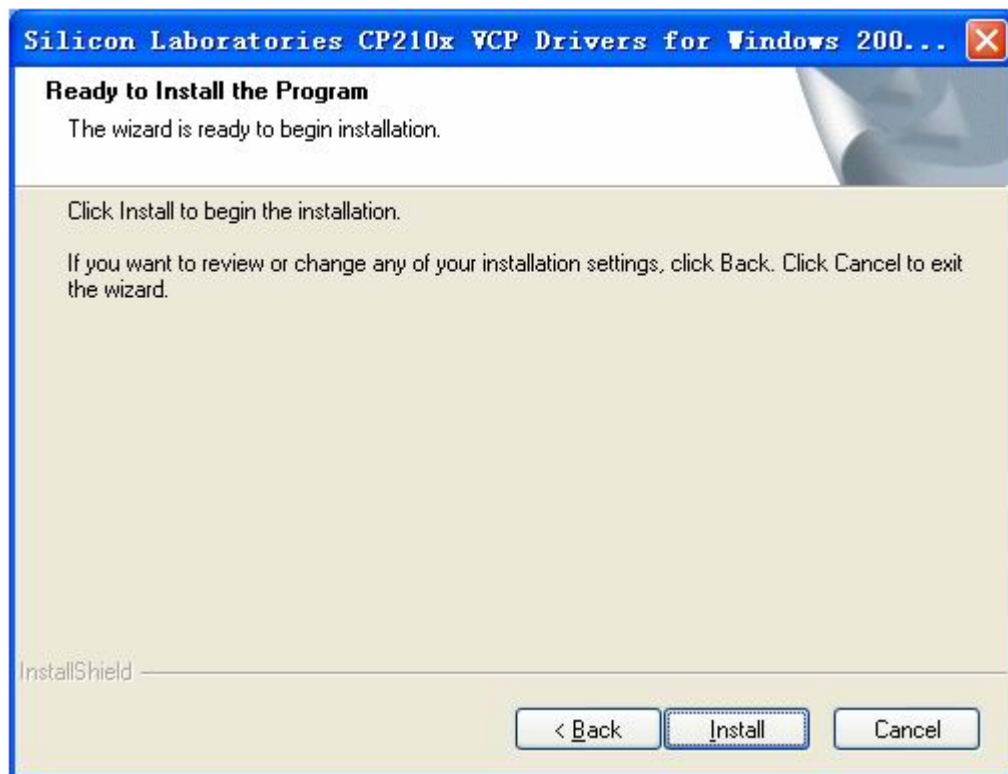
Click next



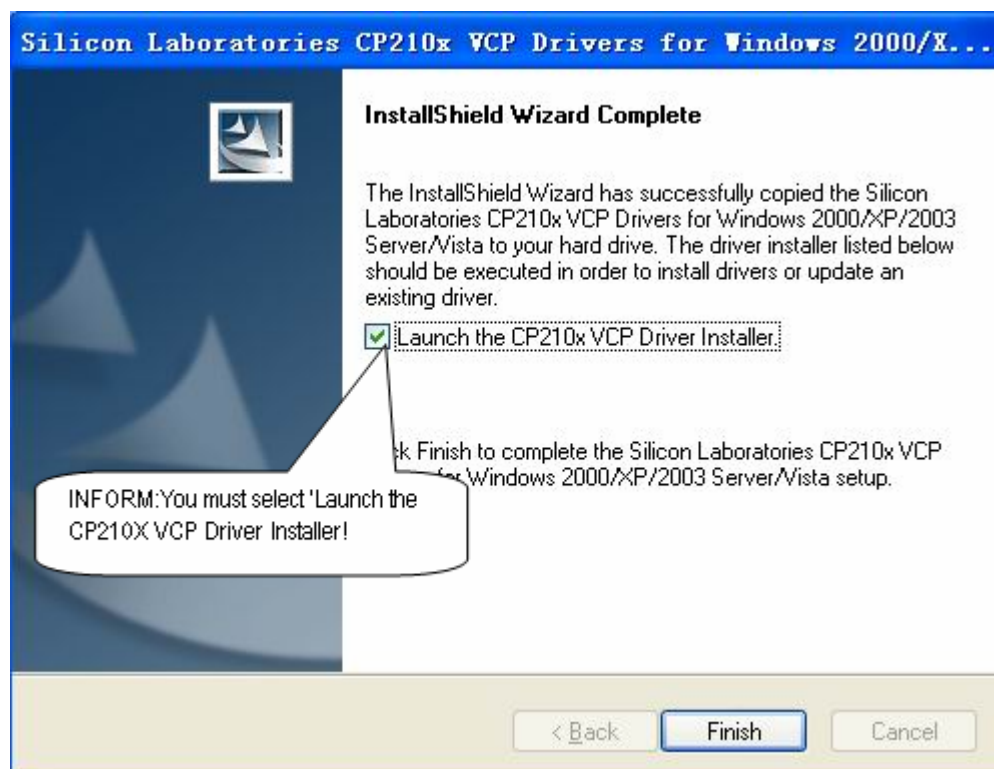
Select "I accept the terms of license agreement",click next.



Click next.



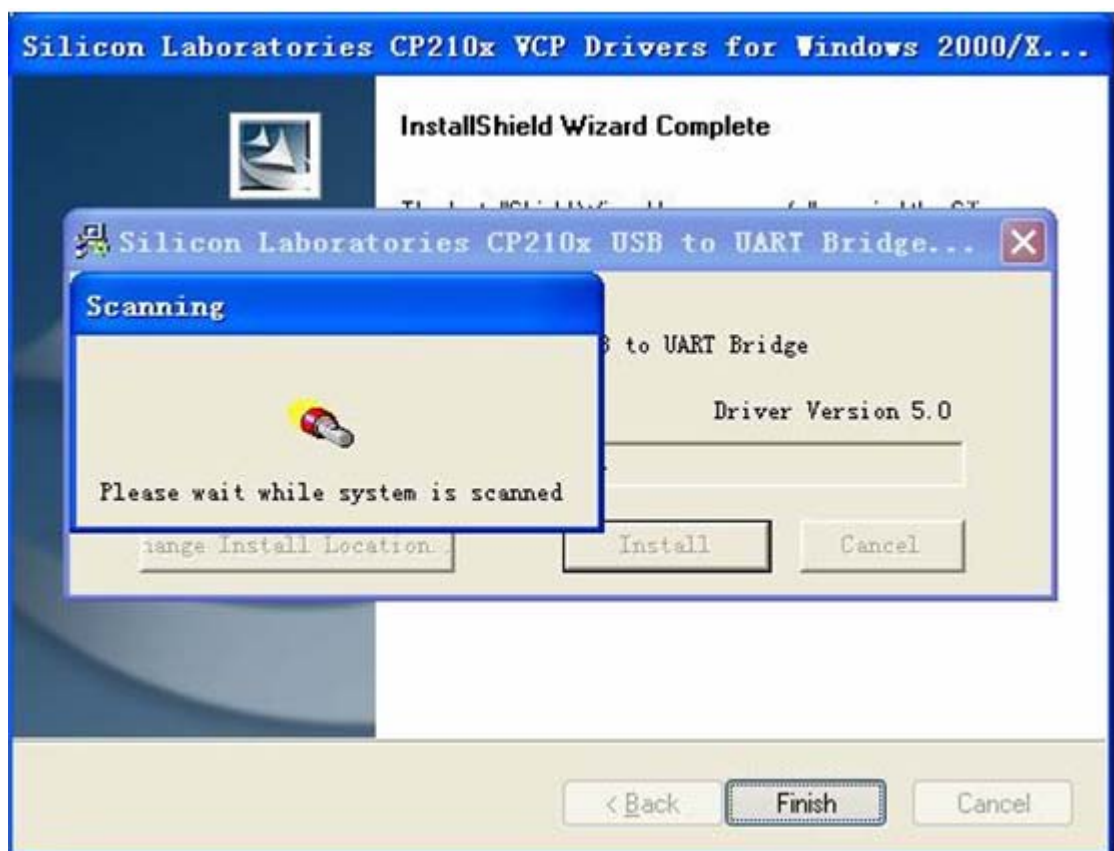
Click Install.



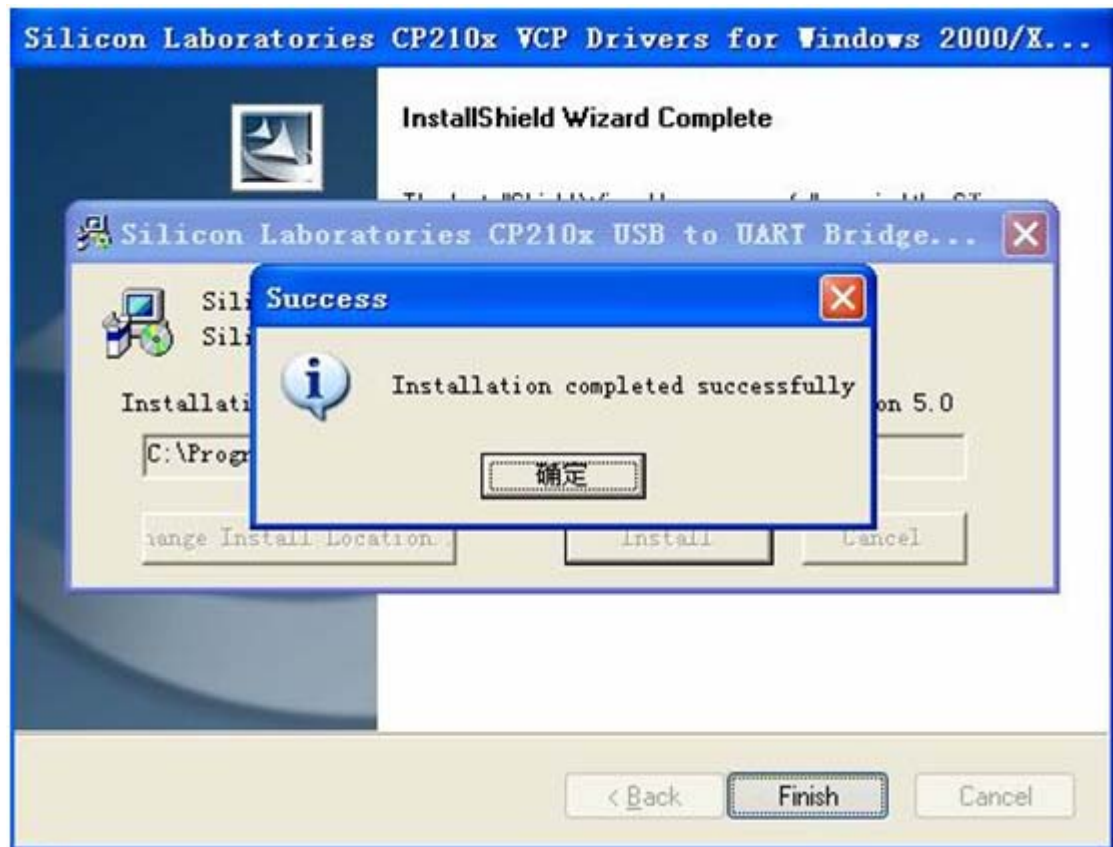
Click Finish.



Click Install to start scan.



After the scan is finished.



Installation is finished successfully!

Then plug the instrument to the available PC USB port and run the PC software to start communication.